



UXBRIDGE ROAD, KINGSTON UPON THAMES, KT1

GUIDE PRICE £565,000

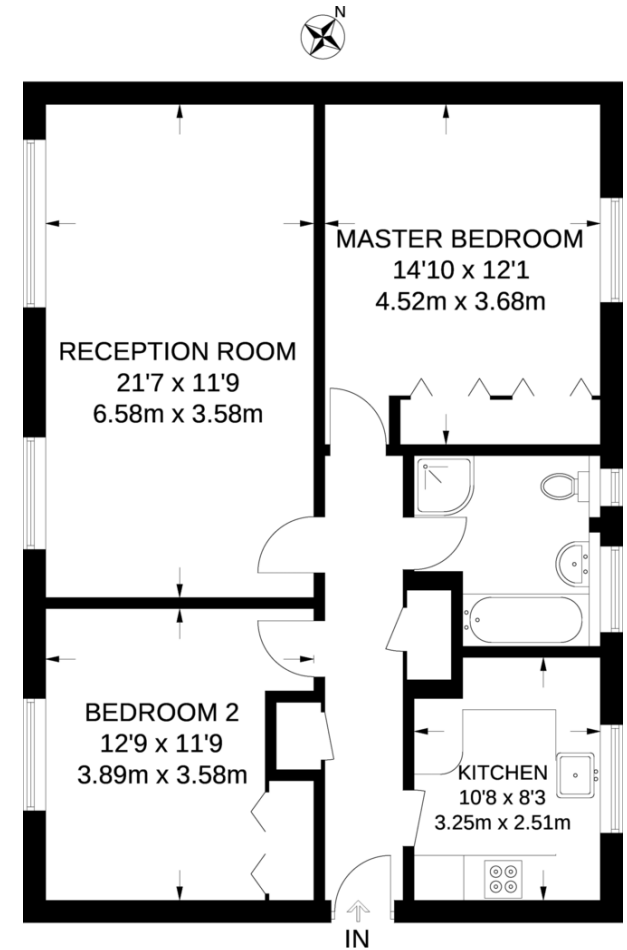




Energy Efficiency Rating		Current	Potential
Very energy efficient - lower running costs			
(92-100)	A		
(81-91)	B		
(69-80)	C		
(55-68)	D		
(39-54)	E		
(21-38)	F		
(1-20)	G		
Not energy efficient - higher running costs			
		70	77
England, Scotland & Wales		EU Directive 2002/91/EC	

Environmental Impact (CO ₂) Rating		Current	Potential
Very environmentally friendly - lower CO ₂ emissions			
(92-100)	A		
(81-91)	B		
(69-80)	C		
(55-68)	D		
(39-54)	E		
(21-38)	F		
(1-20)	G		
Not environmentally friendly - higher CO ₂ emissions			
		72	74
England, Scotland & Wales		EU Directive 2002/91/EC	

Recently refurbished to a high standard this wonderful two bedroom Raised ground floor flat offers well presented living space benefiting from large reception room and stylish kitchen.



GROUND FLOOR

APPROXIMATE GROSS INTERNAL AREA
856 SQ FT / 79.5 SQ M

NO MINIMUM TERM CONTRACTS
NO TIE IN PERIODS
NO HIDDEN FEES

INVESTORS

www.newbrix.co.uk
020 8396 7171
hello@newbrix.co.uk

SELLERS

LET BY

FOR SALE

FOR RENT

LANDLORDS

Facebook, Twitter, YouTube, Google+ icons

Agents Note: Whilst every care has been taken to prepare these sales particulars, they are for guidance purposes only. All measurements are approximate and for general guidance purposes only and whilst every care has been taken to ensure their accuracy, they should not be relied upon and potential buyers are advised to recheck the measurements.

