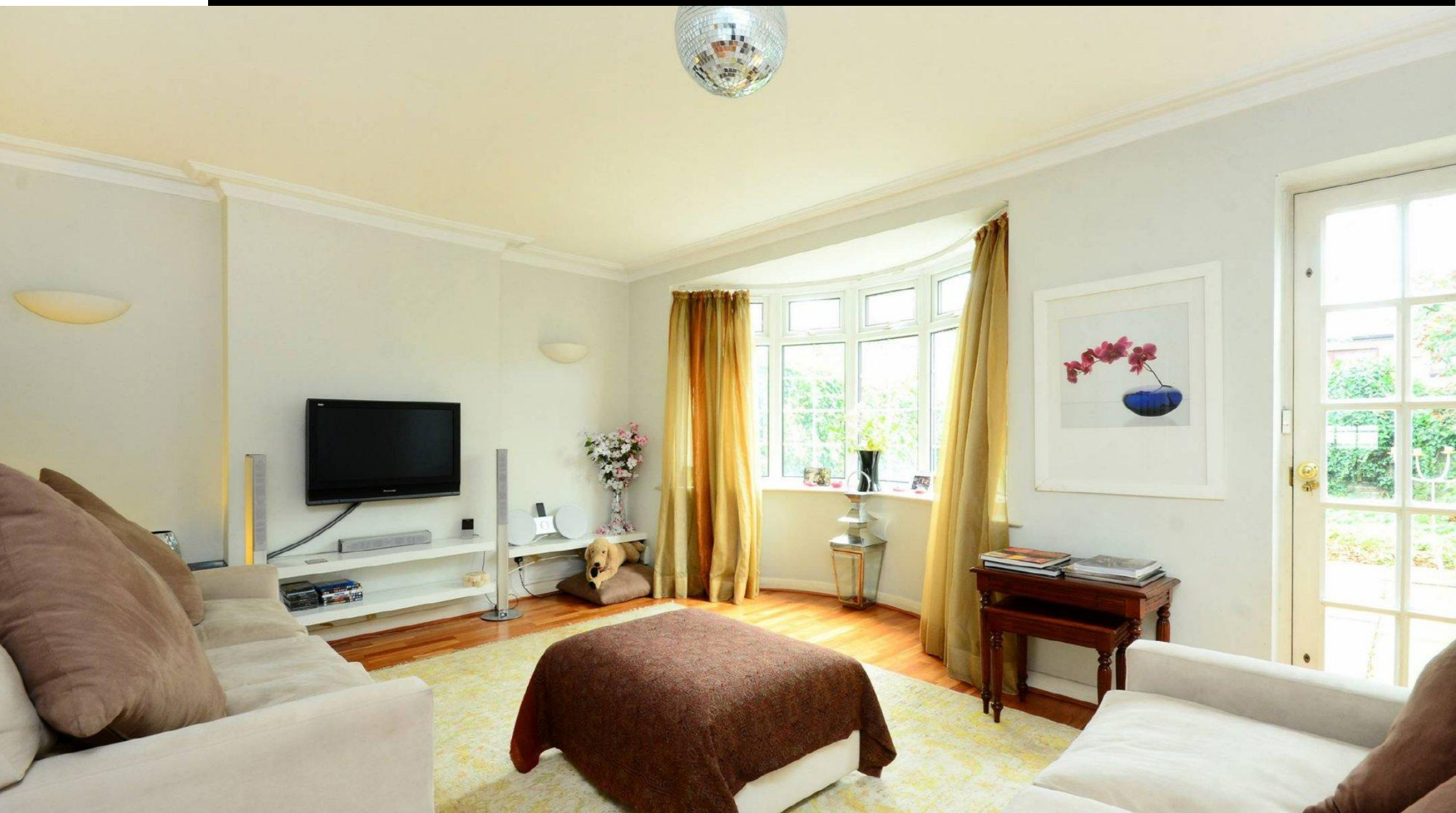
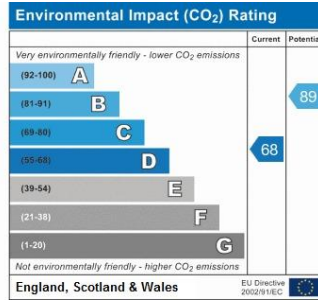
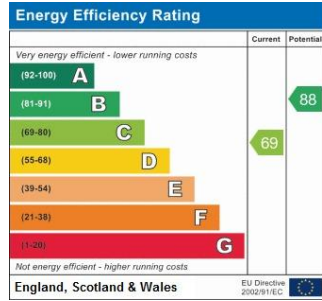




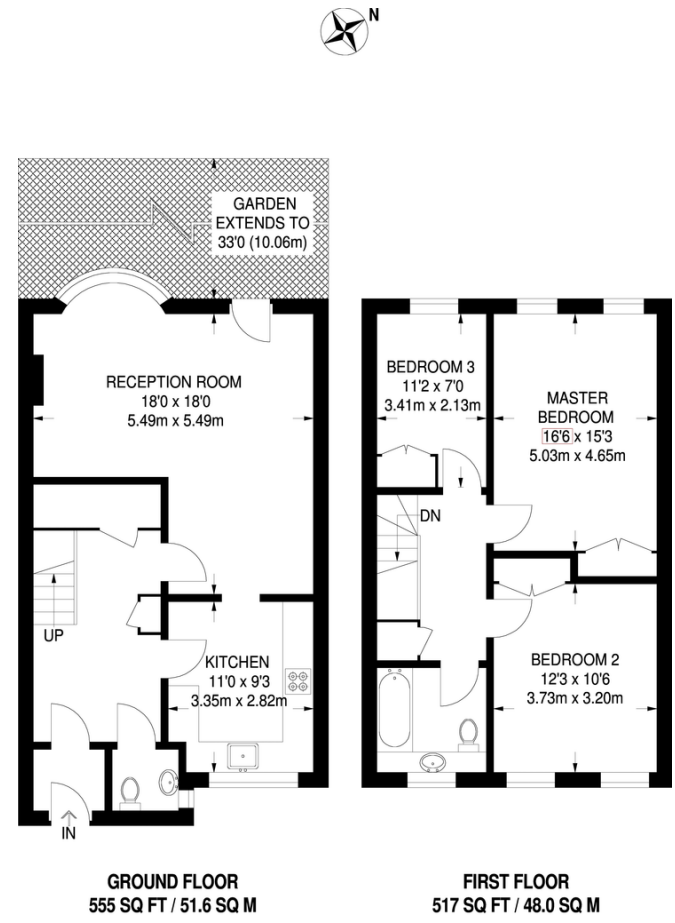
GLENVILLE ROAD, KINGSTON UPON THAMES, KT2

GUIDE PRICE £750,000





This spacious three bedroom house boasts a stunning 18' reception room with plenty of room for dining, modern kitchen and access to a private rear garden



APPROXIMATE GROSS INTERNAL AREA  
1072 SQ FT / 99.6 SQ M

**NO** MINIMUM TERM CONTRACTS  
**NO** TIE IN PERIODS  
**NO** HIDDEN FEES

INVESTORS

www.newbrix.co.uk  
020 8396 7171  
hello@newbrix.co.uk

SELLERS

LET BY

FOR SALE

FOR RENT

LANDLORDS

Facebook, Twitter, YouTube, Google+ icons

Agents Note: Whilst every care has been taken to prepare these sales particulars, they are for guidance purposes only. All measurements are approximate and for general guidance purposes only and whilst every care has been taken to ensure their accuracy, they should not be relied upon and potential buyers are advised to recheck the measurements.

